

RETRACTABLE SHADING SYSTEMS

ECLIPSE | PRESTIGE CASSETTE



eclipse
SHADING SYSTEMS®

ECLIPSEAWNING.COM

UNIQUELY DESIGNED

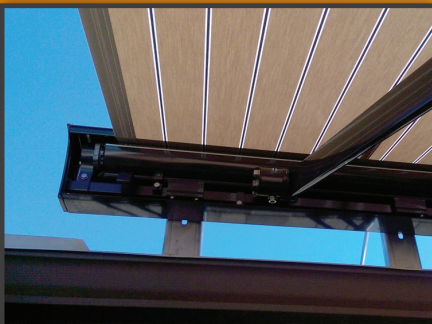


WHEN ONLY THE BEST WILL DO

The Prestige is a modular, "full cassette" shading system that is designed to fully protect the fabric and framework when retracted. The motorized Prestige is available in dozens of long lasting designer fabrics from Sunbrella and requires no seasonal take-down. For low sun or for added privacy, this shading system can be constructed with an optional Drop Shade which extends vertically down the front bar - up to 38". This option is available in all projections up to 19' wide.



IDEAL FOR ROOF MOUNTING



When the ideal mounting location of your retractable awning is on a roof, the Prestige Cassette is the solution. The fully enclosed design of this shading system provides both longevity and protection against the constant exposure to the elements. The Prestige Cassette has an optional powder coated matching back panel which aids in protecting the fabric, arms and motor from the elements. Your fabric will look new for an extended period and will last longer as well.

TO MEET YOUR NEEDS



WHEN SMALLER IS BETTER

With a profile height of only 8" the Prestige Cassette is the ideal shading system for tight areas or for discerning homeowners who believe in subtle attachments to their home. For the business owner who wants the durability of a quality shading system and also values the security of a fully enclosed retracted system when not in use, look no further than the Prestige.



FULLY RETRACTABLE



The Prestige Cassette offers a clean and sleek profile when fully retracted. When not in use, the fabric, much like the awning, is concealed inside a housing protecting it from the elements. Superior strength, combined with an elegant designer look, makes the Eclipse Prestige retractable awning the ideal shading system for those who take pride in their home's appearance.

PRODUCT OPTIONS



MOTORIZED DROP SHADE

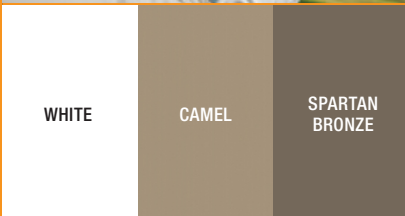
Add even more solar protection while increasing your privacy with a Drop Shade. This option features an open mesh, sun screen fabric that extends down 38" from the front bar over the width of the awning. The Drop Shade is self storing and completely hidden when not in use. This option is available on 10'0" and 11'6" projections with a maximum width of 19'0".



ELECTRONIC ACCESSORIES

Our world class wireless components make operating your shading system effortless.

- **Wind/Motion Sensor:** This accelerometer sensor attached to the awning's framework will retract the unit if it gets too windy – adding a level of safety and security.
- **Sun Sensor:** This sensor, typically mounted to an exterior wall, will automatically extend the awning once the preset sun level is attained, and will automatically retract your shading system when the sun passes.
- **My Link:** Do you like to control things with your smart device? Add a My Link radio controller and download a simple App allowing you to control your shading system from anywhere!



HARDWARE TO MATCH YOUR DÉCOR

Eclipse offers three architecturally pleasing colors to either match or accentuate your home. Our pretreated powder coated finishes are second to none in durability and appearance.



BACK PANEL FOR ROOF MOUNTING

Completely protect your fabric, motor and framework from the elements with this option when roof mounting. The aluminum, powder coated back panel locks into the cassette box housing providing a clean, finished look.



FROM SERENE TO STUNNING, WE HAVE THE FABRIC FOR YOU

Eclipse offers over 150 long lasting, 100% acrylic fabrics from which to choose. Our covers are computer cut and sewn to create a superior fitted awning. We use the finest Tenera thread allowing us to offer you a 10 year warranty on the complete fabric cover.



EXTENDED WARRANTY – ADD A LEVEL OF SECURITY

Looking for an extended warranty to protect your investment? Eclipse offers two levels of extended warranties including limited lifetime system coverage. Ask your dealer for complete details.

THE NEXT GENERATION IN SHADING



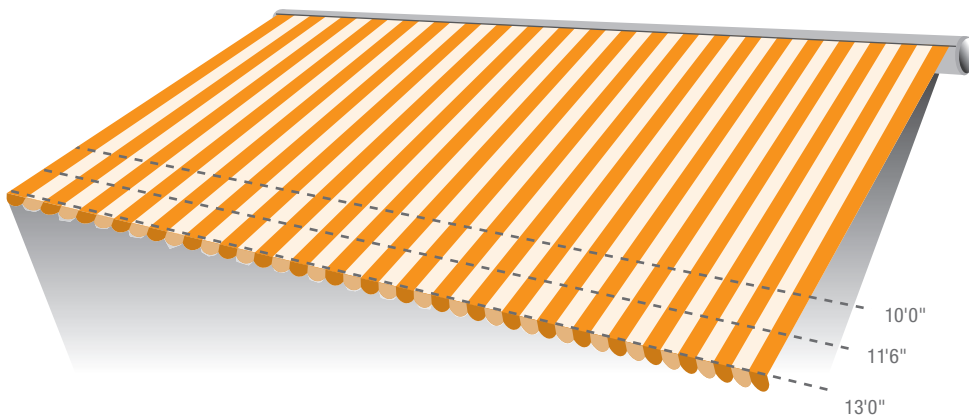
BESPOKE SHADING THAT COMBINES ELEGANCE & STRENGTH

The fully custom made Eclipse Prestige Cassette provides on demand shade while offering European style and design. The sleek compact design of the Prestige Cassette allows it to be mounted on virtually all surfaces and blends harmoniously into any decor. But don't let the size fool you. Drop forged cast components combined with ABT belt arms allow the Prestige Cassette to exceed the highest level of industry testing. The Prestige Cassette is a Class III rated retractable shading system that has also been tested to meet and exceed the Beaufort Scale rating of 6 which is 31 mph of sustained wind speeds.



PRODUCT FEATURES

Up to 22' Width, 19' with Optional Drop Shade (1/4" increments)



SIZES AVAILABLE

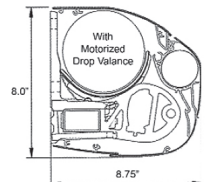
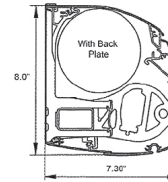
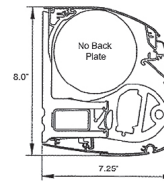
This system is available in 3 projections up to 13', in widths up to 22' wide in standard format, and up to 19' wide with the optional motorized drop shade for 10'0" & 11'6" projection only.

The Eclipse components meet stringent ISO 9001 and TUV standards and are assembled in the USA by skilled craftspeople.



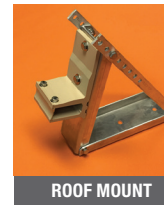
COMPACT UNIT DESIGN

The Prestige is designed to fit into small places and is less obtrusive than other systems, blending harmoniously into the structure.

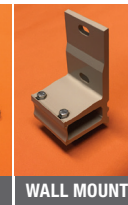


ADVANCED BELT TECHNOLOGY

The Eclipse exclusive tension transmission system which incorporates our ABT has been tested and proven for almost 2 decades on performance. This design does not stretch or breakdown over time, keeping your fabric taut for years to come.



ROOF MOUNT



WALL MOUNT

MOUNTING

Wall or roof mounting available to match your needs.

ABT	60,000 Cycles	TENSION TRANSMISSION SYSTEM
CHAIN	8,000 Cycles	
CABLE	5,000 Cycles	



MOTORIZED

For easy push button operation and includes a manual override feature should you lose power.



Your independently owned and operated dealer

**#1 Rated Brand of Retractable Awning
10 Years In A Row!
2010 - 2019**



For more photos, customer feedback and additional product details, please visit:

ECLIPSEAWNING.COM